

Use Hazard Maps to prepare for disasters!

Floods and Landslides

The Oe Town Hazard Map displays the expected flood inundation area when the Mogami and Tsukinuno rivers overflow due to the assumed maximum rainfall that is expected once every 1,000 years, the assumed flood depth when inundated, and the areas where there is a risk of landslide disaster due to heavy rain, torrential rain, etc., based on the publications of the country and the prefecture.

Be sure to check the locations and conditions of risk of floods and landslides in the area where you live and the surroundings on a daily basis. Also, in case of heavy rain, pay attention to information such as how hard it is raining, weather information, and evacuation recommendations, and be prepared in case of an emergency.

※Be careful of floods and landslides during heavy rain, even in areas other than those shown on this map.

Prepared by the General Administration Division, Oe Town Office Hall in December 2019
 Phone: 0237-62-2187 Email address: kiki@town.oe.yamagata.jp

How to use hazard maps

- 1 Mark your home!**
Locate your home on the map and mark it.
- 2 Check out dangerous spots!**
Check to see if the area around your home is designated as an expected flood inundation area, landslide warning area, etc., or if there are any dangerous places.
※Even if it's not on the map, if there's a dangerous spot you know, write it down!
- 3 Decide your evacuation route!**
Check the evacuation shelters near your home, consider the evacuation route to the evacuation shelter, and write it on the map. If possible, actually walk your evacuation route.

Types of landslides disasters

- Steep slope failure**
A phenomenon in which the part of the slope near the ground surface loosens due to the infiltration of rainwater or an earthquake, and suddenly collapses.
- Debris flow**
A phenomenon in which earth and sand on the mountainside and valley bottom are swept downstream by long and/or torrential rains.
- Landslide**
A phenomenon in which part or all of the slope slowly moves downward due to the influence of groundwater and gravity.

Landslide emergency warning area
 Landslide warning area

- Steep slope failure emergency warning area
- Steep slope failure warning area
- Debris flow emergency warning area
- Debris flow warning area
- Landslide warning area

Other legends

- Evacuation Shelter
- Rain-gaugestation
- Gauging Station
- Oe Town Hall
- Fire Department
- Police Box / Residential Police Box
- Doctor's Office
- Highway
- National Route
- Prefectural Road

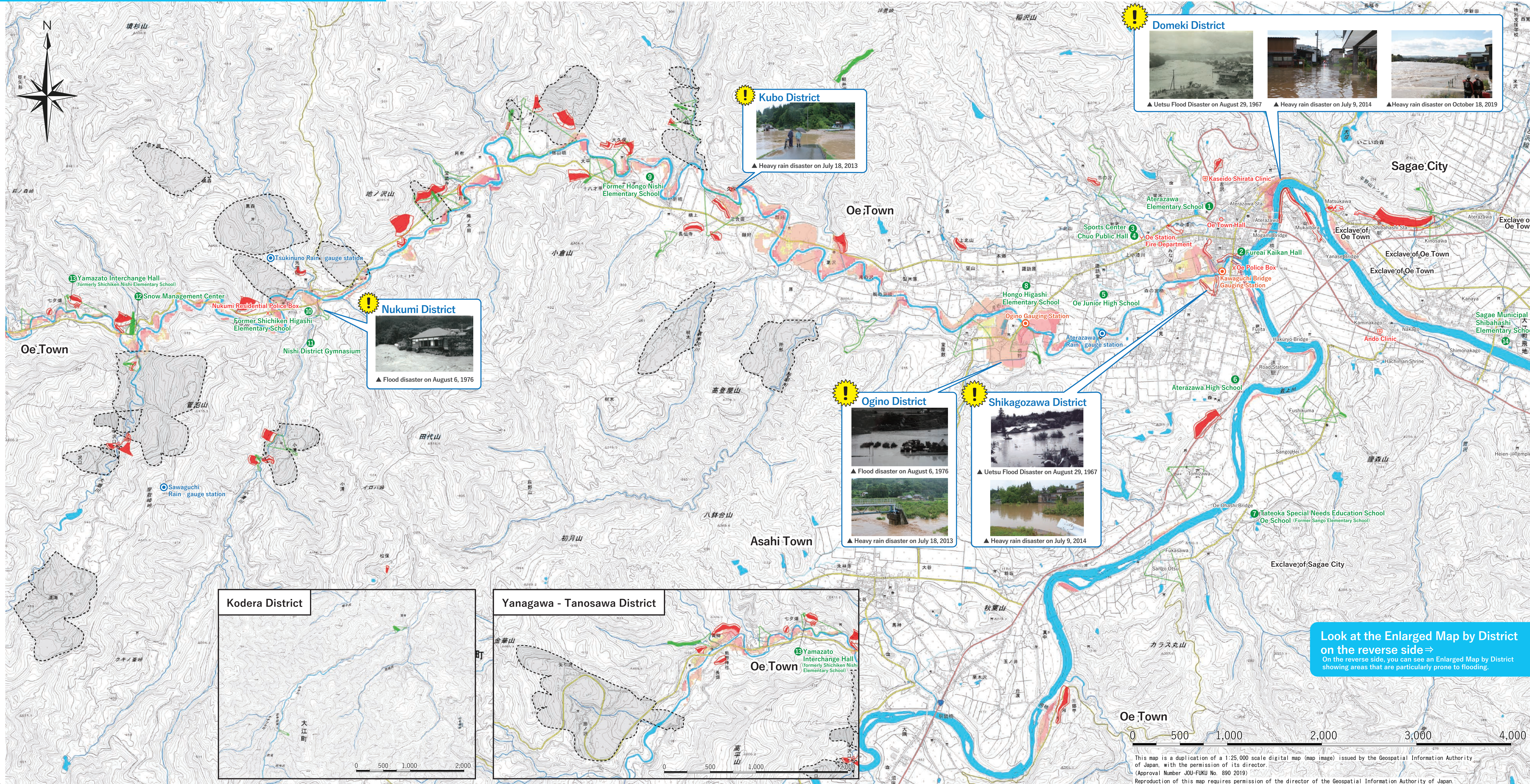
Expected flood inundation area
 Rough indication of flood depth

- 10m to less than 20m
- 5m to less than 20m
The Flood Hazard Map displays the expected water depth by color when rivers overflow due to heavy rain. Check the flood depth on the map.
- 3m to less than 5m (Inundated above the 2nd floor)
- 0.5m to less than 3m (Inundated above the 1st floor)
- Less than 0.5m

Maximum inundation area due to past inundation damage

※Areas with this mark are areas that suffered major damage in the past. Check it on the Enlarged Map by District (reverse side).

List of evacuation shelters	Phone	Location
1 Aterazawa Elementary School	62-3273	816-2 Aterazawa, Oe Town
2 Fureai Kaikan Hall	62-3822	306 Aterazawa, Oe Town
3 Sports Center	62-3663	373-1 Tei Hongo, Oe Town
4 Chuo Public Hall	62-3666	373-1 Tei Hongo, Oe Town
5 Oe Junior High School	62-4155	605 Ki Hongo, Oe Town
6 Yamagata Prefectural Aterazawa High School	62-2169	816-3 Yamanaka, Fujita, Oe Town
7 Yamagata Prefectural Tateoka Special Needs Education School Oe School (Former Sango Elementary School)	85-0723	1403-1 Hei Sango, Oe Town
8 Hongo Higashi Elementary School	62-2821	275-2 Hei Hongo, Oe Town
9 Former Hongo Nishi Elementary School	—	117-1 Ko Jyuhassai, Oe Town
10 Former Shichiken Higashi Elementary School	83-6020	693-2 Nukumi, Oe Town
11 Nishi District Gymnasium	64-2946	468-2 Nukumi, Oe Town
12 Snow Management Center	64-2007	23-1 Sagaguchi, Oe Town
13 Yamazato Interchange Hall (formerly Shichiken Nishi Elementary School)	64-2507	959-1 Yanagawa, Oe Town
14 Sagae Municipal Shibahashi Elementary School	86-2445	1923 Shibahashi, Sagae City



Look at the Enlarged Map by District on the reverse side
 On the reverse side, you can see an Enlarged Map by District showing areas that are particularly prone to flooding.

This map is a duplication of a 1:25,000 scale digital map (map image) issued by the Geospatial Information Authority of Japan, with the permission of its director. (Approval Number JOU-FUKU No. 890 2019)
 Reproduction of this map requires permission of the director of the Geospatial Information Authority of Japan.