



Enlarged Map by District

In Oe Town, major floods have occurred frequently in recent years. In particular, the Domeki, Shikagozawa, Ogino, Kubo, and Nukumi districts suffered significant flooding damage due to heavy rain in the past. Check the flood depth of the area damage where you live, the surroundings, and the path from your home to the evacuation shelter on the hazard map on a daily basis.

Have a look!



You can view the Oe Town Hazard Map and information useful for evacuation on the Oe Town website. In addition, when you click the number of the district you want to view on the website, an Enlarged Map by District will be displayed.

Take a closer look at the district you want to check on the Enlarged Map by District!

When accessing from a cellular phone

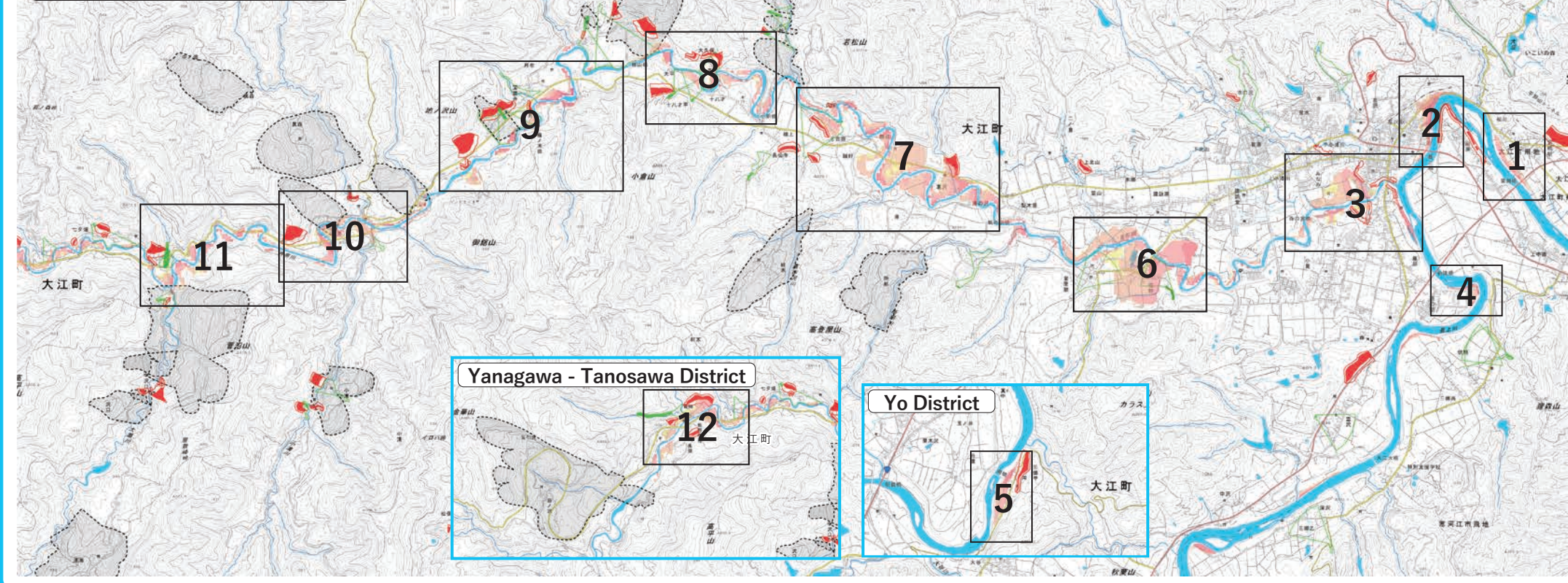
You can access and browse using the QR code at the top right, or you can browse by word search on the Internet.

When accessing from a personal computer
You can browse by word search on the Internet.

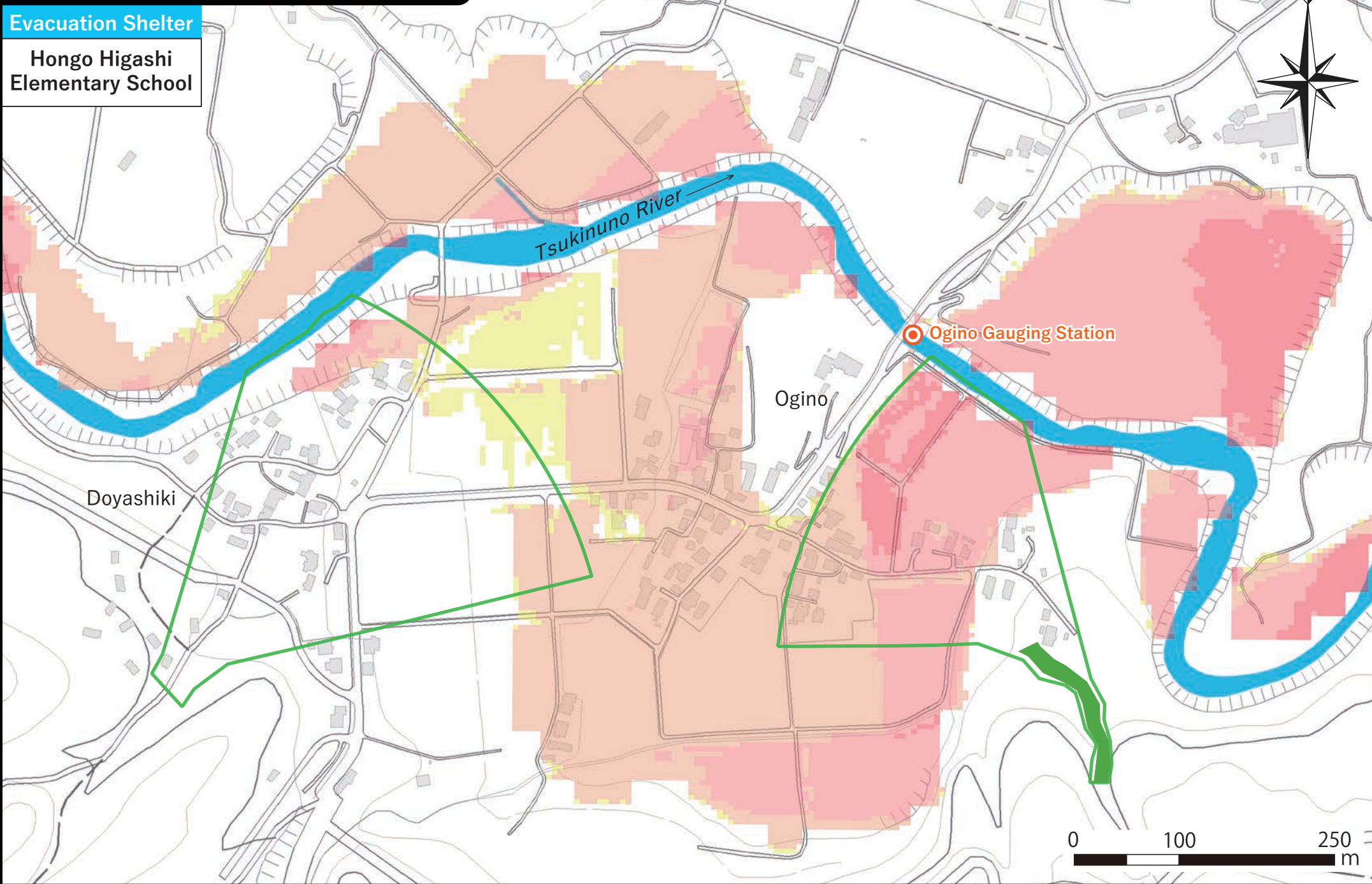
Search Word



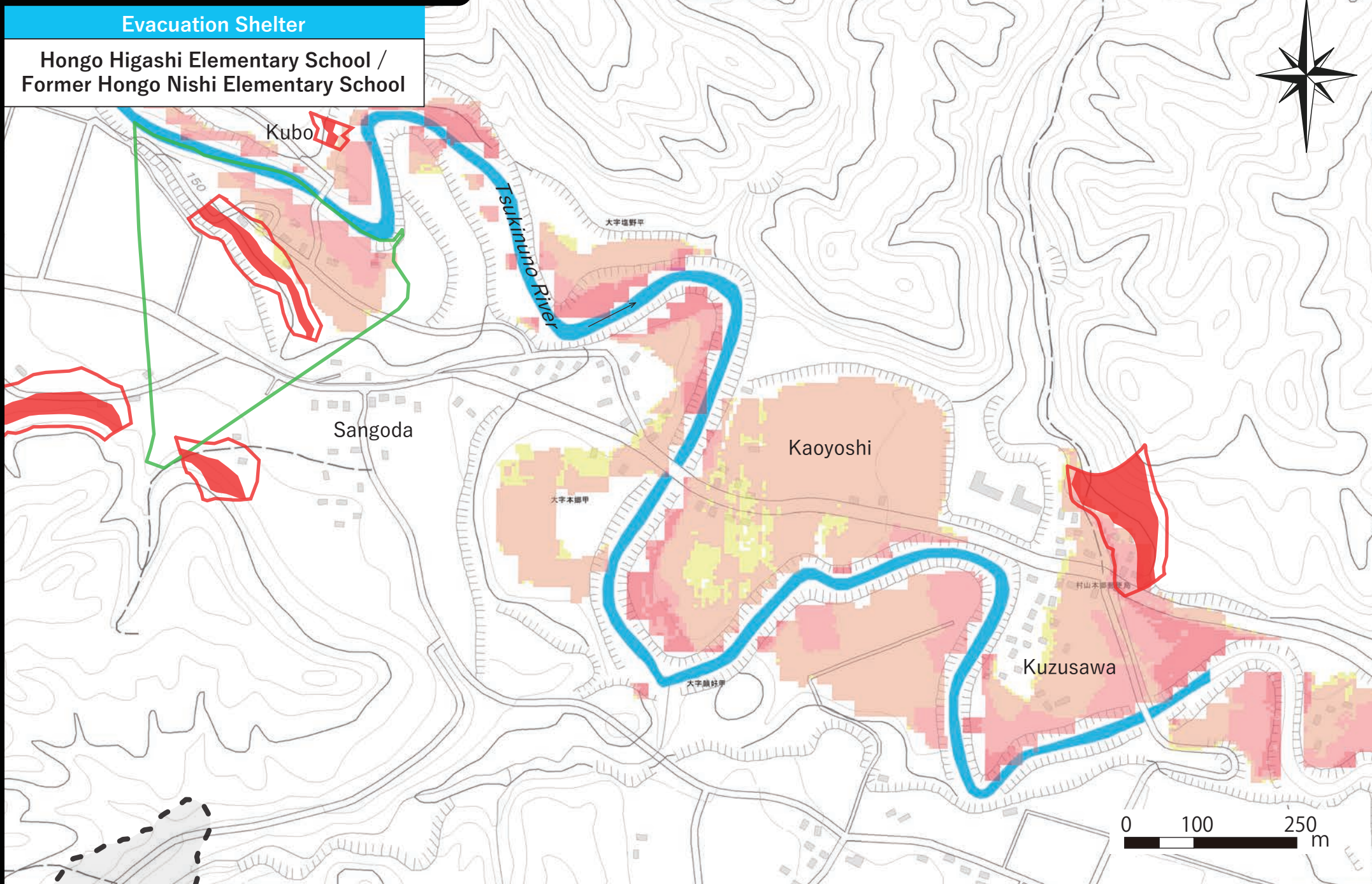
Range of enlarged display



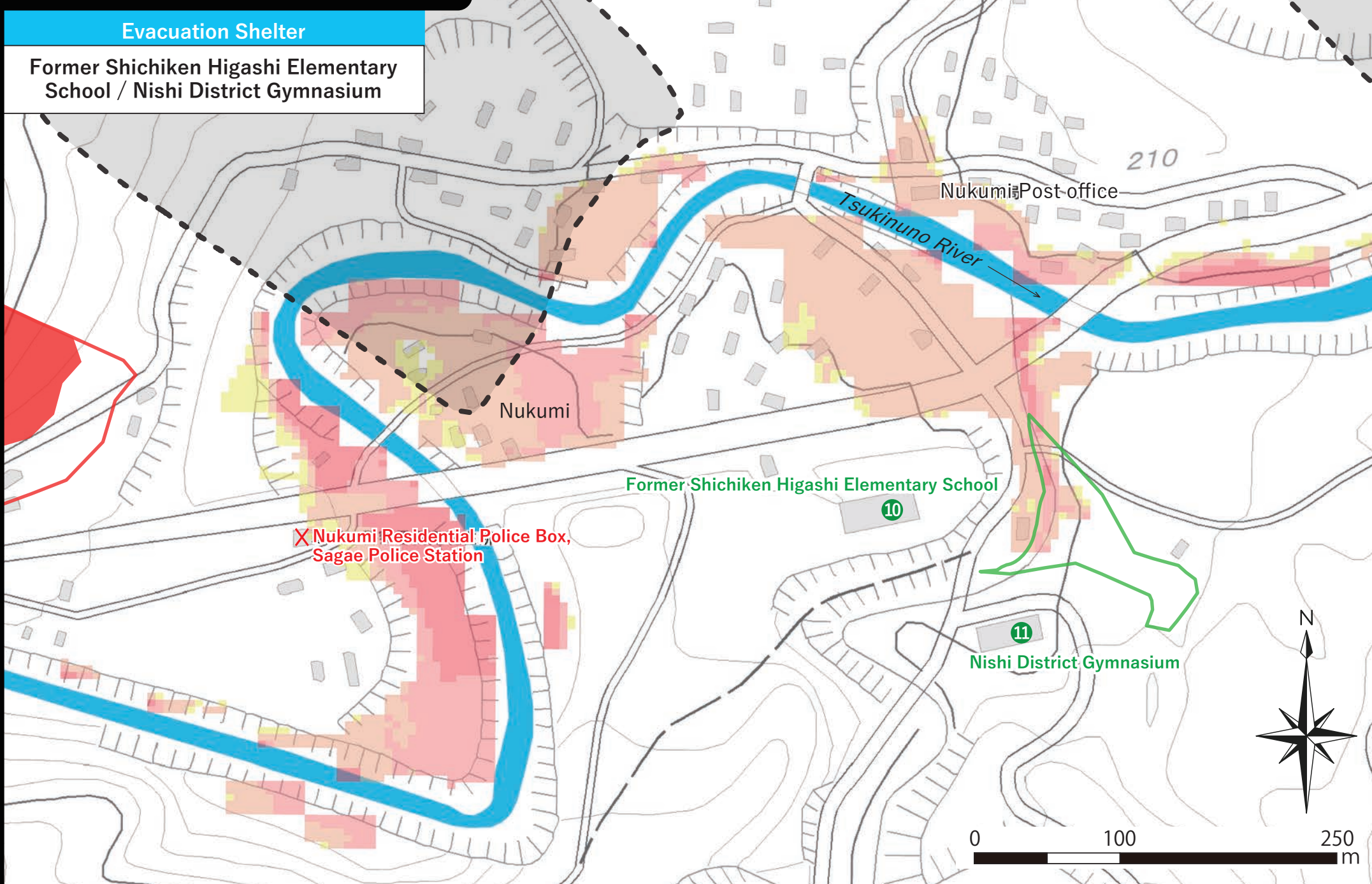
Ogino-Doyashiki District



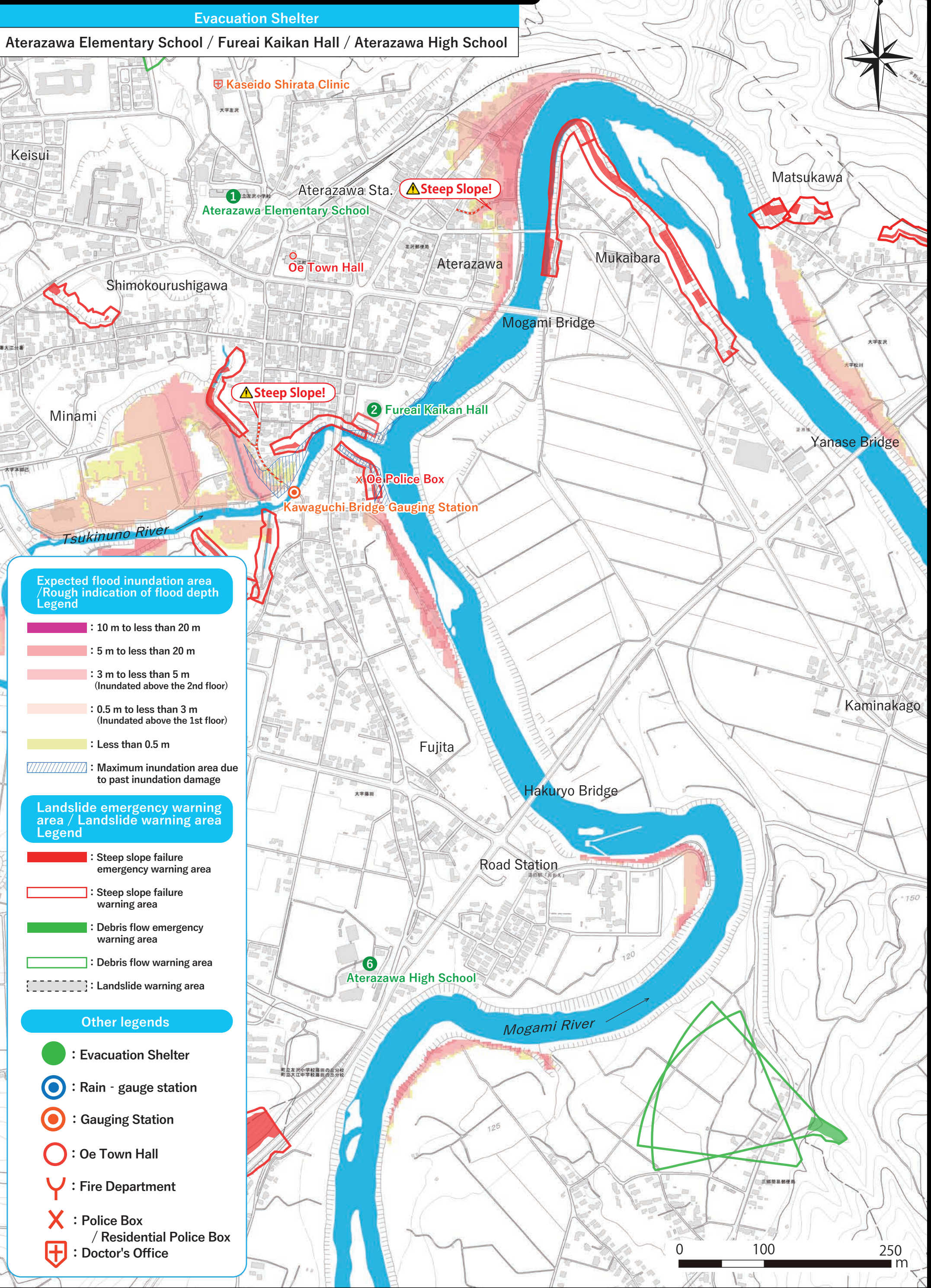
Kuzusawa-Kubo District



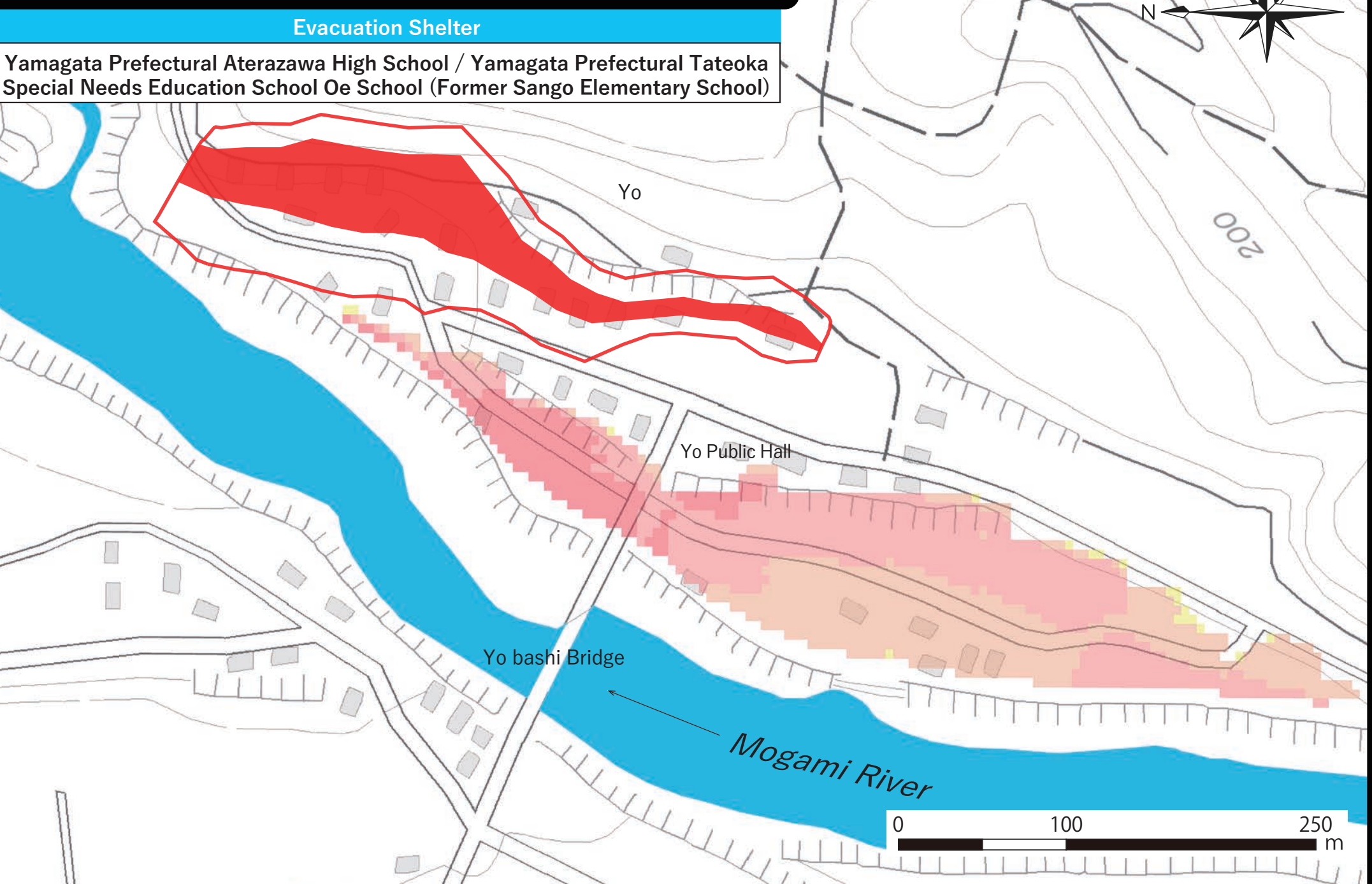
Nukumi District



Aterazawa / Shikagozawa / Fujita District



Yo District



Yanagawa District

